

February 27, 2020

ABCD

102 Asma Boulevard
Suite 305
Lafayette, LA 70508

(337)232-5182

FAX (337)237-7132

www.dsaengineering.com

TO ALL HOLDERS OF PLANS
AND SPECIFICATIONS:

RE: New Office for the Opportunity Machine
for the
Lafayette Economic Development Authority
(DSA No. 4867.02)

ATTENTION:

Attached is ADDENDUM NO. 3 for the subject project. Please include it in your set of specifications and consider it when making your bid.

Sincerely,

DOMINGUE, SZABO & ASSOCIATES, INC.



Chris Richard, PE

CKR/
Enclosure(s)

UNOFFICIAL COPY

**ADDENDUM TO
CONTRACT DOCUMENTS
AND SPECIFICATIONS**

**New Office for the Opportunity Machine
for the
Lafayette Economic Development Authority
(DSA No. 4867.02)**

ADDENDUM NO. 3

February 27, 2020

The following items shall take precedence over referenced to counterparts in the specifications, contract drawings and any other documents in conflict herewith.

**NOTE: BIDDER IS REQUIRED TO ACKNOWLEDGE RECEIPT OF ADDENDUM
IN THE SPACE PROVIDED ON THE BID FORM**

Item No. 1 As a note of Clarification: The CMU/Brick Fence along Jefferson Street shall be painted in accordance with Section 09 91 13.

Item No. 2 See attached Architectural Addendum items.

End of Addendum No. 3

ABCD

**MBSB Group
101 La Rue France, Suite 205
Lafayette, La 70508**

TO: Plan Holders

**RE: Lafayette Economic Development Authority
New Office For
Opportunity Machine**

**314 Jefferson St.
Lafayette LA 70501**

Architects Project Number – 201807.00

Project plans and manual dated January 2020

This Addendum shall be considered as part of the original Contract Documents for the above-mentioned Project as though it had been issued at the same time and incorporated integrally therewith. All changes to the work and/or additional work contained herein shall be governed by the requirements of the Contract Documents. Where provisions of the following supplementary data differ from those of the original Contract Documents, this Addendum shall govern and take precedence.

ADDENDUM NO. 3:

DRAWINGS:

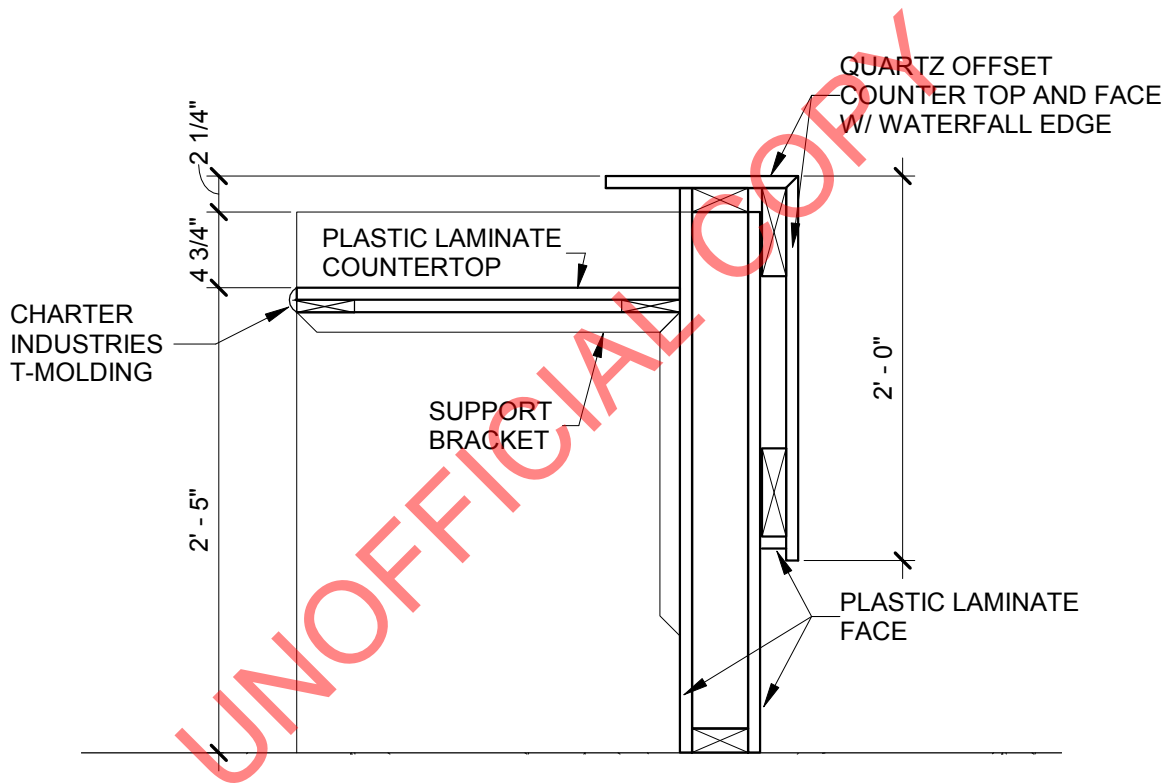
1. REMOVE detail 11/A7.3R1 and REPLACE with attached “Addendum 3 - Item A1”

PROJECT MANUAL:

1. REMOVE Specification section “087100 – Door Hardware” and REPLACE with Attached Specification “Addendum #3 - Section 087100 – Door Hardware

End of Addendum 3

ADDENDUM 3 - ITEM A1



① MILLWORK DETAIL-FRONT DESK ADA
1" = 1'-0"

Section 087100 - Door Hardware

PART 1 - GENERAL

1.1 RELATED DOCUMENTS

- A. Drawings and general provisions of the Contract, including General and Supplementary Conditions and Division 01 Specification Sections, apply to this Section.

1.2 SUMMARY

- A. Section includes: ,

1. Mechanical door hardware for the following:
 - a. Swinging doors.
 - b. Other doors to the extent indicated.
2. Cylinders for doors specified in other Sections.
3. Electrified hardware.

- B. Related Sections:

1. Division 06 Section 064023 "Interior Architectural Woodwork" for cabinet door hardware provided as part of architectural woodwork.
2. Division 08 Section 081113 "Hollow Metal Doors and Frames" for door silencers provided as part of hollow-metal frames.
3. Division 08 Section "Flush Wood Doors" for astragals as part of fire-rated labeled assemblies.
4. Division 08 Section "Aluminum-Framed Entrances and Storefronts".
5. Division 26 Sections for connections to electrical power system and for low-voltage wiring work.
6. Division 28 Section "Intrusion Detection" for detection devices installed at door openings and furnished as part of an intrusion detection system.
7. Division 28 Section "Fire Detection and Alarm" for connections to building fire alarm system.

1.3 ACTION SUBMITTALS

- A. Product Data: For each type of product indicated. Include construction and installation details, material descriptions, dimensions of individual components and profiles, and finishes.
- B. Samples for Initial Selection: For plastic protective trim units in each finish, color, and texture required for each type of trim unit indicated.
- C. Shop Drawings: Details of electrified and access control hardware, indicating the following:

1. System Block Wiring Diagrams: Detail wiring for power, signal, and control systems and differentiate between manufacturer-installed and field-installed wiring. Include the following for each unique electrified opening:
 - a. Point-to-point system wiring and riser diagrams.
 - b. Elevation diagram of each door.
 - c. Operational description.

- D. Door Hardware Schedule: Prepared by or under the supervision of supplier, detailing fabrication and assembly of door hardware, as well as procedures and diagrams. Coordinate the final Door Hardware Schedule with doors, frames, and related work to ensure proper size, thickness, hand, function, and finish of door hardware.
 1. Format: Comply with scheduling sequence and vertical format in DHI's "Sequence and Format for the Hardware Schedule."
 2. Organization: Organize the Door Hardware Schedule into door hardware sets indicating complete designations of every item required for each door or opening.
 - a. Organize door hardware sets in same order as in the Door Hardware Sets at the end of Part 3. Submittals that do not follow the same format and order as the Door Hardware Sets will be rejected and subject to resubmission.
 3. Content: Include the following information:
 - a. Type, style, function, size, label, hand, and finish of each door hardware item.
 - b. Manufacturer of each item.
 - c. Fastenings and other pertinent information.
 - d. Location of door hardware set, cross-referenced to Drawings, both on floor plans and in door and frame schedule.
 - e. Explanation of abbreviations, symbols, and codes contained in schedule.
 - f. Mounting locations for door hardware.
 - g. Door and frame sizes and materials.
 - h. Description of each electrified door hardware function, including location, sequence of operation, and interface with other building control systems.
 - 1) Sequence of Operation: Include description of component functions including, but not limited to, the following situations: normal secured/unsecured state of door; authorized access; authorized egress; unauthorized access; unauthorized egress; fire alarm and loss of power conditions.
 4. Submittal Sequence: Submit the final Door Hardware Schedule at earliest possible date, particularly where approval of the Door Hardware Schedule must precede fabrication of other work that is critical in the Project construction schedule. Include Product Data, Samples, Shop Drawings of other work affected by door hardware, and other information essential to the coordinated review of the Door Hardware Schedule.

- E. Keying Schedule: Prepared under the supervision of the Owner, separate schedule detailing final keying instructions for locksets and cylinders in writing. Include keying system explanation, door numbers, key set symbols, hardware set numbers and special instructions. Owner to approve submitted keying schedule prior to the ordering of permanent cylinders.

- F. Maintenance Data: For each type of door hardware to include in maintenance manuals specified in Division 1. Upon completion of construction and building turnover, furnish two (2) complete maintenance manuals to the owner. Manuals to include the following items:
1. Approved hardware schedule, catalog cuts and keying schedule.
 2. Furnish keying bitting list in paper and electronic format by registered mail directly to facility manager owner.
 3. Hardware installation and adjustment instructions.
 4. Manufacturer's written warranty information.
 5. Wiring diagrams, elevation drawings and operational descriptions for all electronic openings.

1.4 CLOSEOUT SUBMITTALS

- A. Maintenance Data: For each type of door hardware to include in maintenance manuals. Include final hardware and keying schedule.

1.5 QUALITY ASSURANCE

- A. Installer Qualifications: Supplier of products and an employer of workers trained and approved by product manufacturers and an Architectural Hardware Consultant who is available during the course of the Work to consult with Contractor, Architect, and Owner about door hardware and keying.
1. Warehousing Facilities: In Project's vicinity.
 2. Scheduling Responsibility: Preparation of door hardware and keying schedules.
 3. Engineering Responsibility: Preparation of data for electrified door hardware, including Shop Drawings, based on testing and engineering analysis of manufacturer's standard units in assemblies similar to those indicated for this Project.
- B. Architectural Hardware Consultant Qualifications: A person who is experienced in providing consulting services for door hardware installations that are comparable in material, design, and extent to that indicated for this Project.
- C. Source Limitations: Obtain each type of door hardware from a single manufacturer.
1. Provide electrified door hardware from same manufacturer as mechanical door hardware, unless otherwise indicated. Manufacturers that perform electrical modifications and that are listed by a testing and inspecting agency acceptable to authorities having jurisdiction are acceptable.
- D. Fire-Rated Door Assemblies: Where fire-rated door assemblies are indicated, provide door hardware rated for use in assemblies complying with NFPA 80 that are listed and labeled by a qualified testing agency, for fire-protection ratings indicated, based on testing at positive pressure according to NFPA 252 or UL 10C, unless otherwise indicated.
- E. Smoke- and Draft-Control Door Assemblies: Where smoke- and draft-control door assemblies are required, provide door hardware that meet requirements of assemblies tested according to UL 1784 and installed in compliance with NFPA 105.

1. Air Leakage Rate: Maximum air leakage of **0.3 cfm/sq. ft. (3 cu. m per minute/sq. m)** at the tested pressure differential of **0.3-inch wg (75 Pa)** of water.
- F. Electrified Door Hardware: Listed and labeled as defined in NFPA 70, Article 100, by a testing agency acceptable to authorities having jurisdiction.
- G. Means of Egress Doors: Latches do not require more than **15 lbf (67 N)** to release the latch. Locks do not require use of a key, tool, or special knowledge for operation.
- H. Accessibility Requirements: For door hardware on doors in an accessible route, comply with the U.S. Architectural & Transportation Barriers Compliance Board's ADA-ABA Accessibility Guidelines ICC/ANSI A117.1.
 1. Provide operating devices that do not require tight grasping, pinching, or twisting of the wrist and that operate with a force of not more than **5 lbf (22.2 N)**.
 2. Comply with the following maximum opening-force requirements:
 - a. Interior, Non-Fire-Rated Hinged Doors: **5 lbf (22.2 N)** applied perpendicular to door.
 - b. Sliding or Folding Doors: **5 lbf (22.2 N)** applied parallel to door at latch.
 - c. Fire Doors: Minimum opening force allowable by authorities having jurisdiction.
 3. Bevel raised thresholds with a slope of not more than 1:2. Provide thresholds not more than **1/2 inch (13 mm)** high.
 4. Adjust door closer sweep periods so that, from an open position of 70 degrees, the door will take at least 3 seconds to move to a point **3 inches (75 mm)** from the latch, measured to the leading edge of the door.

1.6 DELIVERY, STORAGE, AND HANDLING

- A. Inventory door hardware on receipt and provide secure lock-up for door hardware delivered to Project site.
- B. Tag each item or package separately with identification coordinated with the final door hardware schedule, and include installation instructions, templates, and necessary fasteners with each item or package.

1.7 COORDINATION

- A. Coordinate layout and installation of floor-recessed door hardware with floor construction. Cast anchoring inserts into concrete.
- B. Installation Templates: Distribute for doors, frames, and other work specified to be factory prepared. Check Shop Drawings of other work to confirm that adequate provisions are made for locating and installing door hardware to comply with indicated requirements.
- C. Security: Coordinate installation of door hardware, keying, and access control with Owner's security consultant.
- D. Electrical System Roughing-In: Coordinate layout and installation of electrified door hardware with connections to power supplies and building safety and security systems.

- E. Existing Openings: Where hardware components are scheduled for application to existing construction or where modifications to existing door hardware are required, field verify existing conditions and coordinate installation of door hardware to suit opening conditions and to provide proper door operation.

1.8 WARRANTY

- A. Special Warranty: Manufacturer's standard form in which manufacturer agrees to repair or replace components of door hardware that fail in materials or workmanship within specified warranty period.

1. Failures include, but are not limited to, the following:

- a. Structural failures including excessive deflection, cracking, or breakage.
- b. Faulty operation of doors and door hardware.
- c. Deterioration of metals, metal finishes, and other materials beyond normal weathering and use.

2. Warranty Period: Three years from date of Substantial Completion, unless otherwise indicated.

- a. Electromagnetic Locks: Five years from date of Substantial Completion.
- b. Locksets: Seven year from date of Substantial Completion.
- c. Manual Closers: 10 years from date of Substantial Completion.

1. Warranty periods will begin at date of substantial completion.
- a. Door closers; minimum ten (10) year warranty.
 - b. Lock sets; minimum five (5) year warranty.
 - c. Exit devices; minimum five (5) year warranty.
 - d. Electrical hardware; minimum one (1) year warranty.
 - e. All other hardware items; minimum one (1) year warranty.

1.9 MAINTENANCE SERVICE

- A. Maintenance Tools and Instructions: Furnish a complete set of specialized tools and maintenance instructions for Owner's continued adjustment, maintenance, and removal and replacement of door hardware.
- B. Maintenance Service: Beginning at Substantial Completion, provide six months' full maintenance by skilled employees of door hardware Installer. Include quarterly preventive maintenance, repair or replacement of worn or defective components, lubrication, cleaning, and adjusting as required for proper door and door hardware operation. Provide parts and supplies that are the same as those used in the manufacture and installation of original products.

PART 2 - PRODUCTS

2.1 SCHEDULED DOOR HARDWARE

- A. Provide door hardware for each door as scheduled on Drawings to comply with requirements in this Section.

1. Door Hardware Sets: Provide quantity, item, size, finish or color indicated, and named manufacturers' products
 2. Sequence of Operation: Provide electrified door hardware function, sequence of operation, and interface with other building control systems indicated.
- B. Designations: Requirements for design, grade, function, finish, size, and other distinctive qualities of each type of door hardware are indicated in Part 3 "Door Hardware Schedule" Article. Products are identified by using door hardware designations, as follows:
1. Named Manufacturers' Products: Manufacturer and product designation are listed for each door hardware type required for the purpose of establishing minimum requirements. Manufacturers' names are abbreviated in Part 3 "Door Hardware Schedule" Article.
 2. References to BHMA Designations: Provide products complying with these designations and requirements for description, quality, and function.

2.2 HINGES

- A. Hinges: BHMA A156.1. Provide template-produced hinges for hinges installed on hollow-metal doors and hollow-metal frames.
1. Manufacturers: Subject to compliance with requirements, available manufacturers offering products that may be incorporated into the Work include, but are not limited to, the following:
 2. Basis-of-Design Product: Subject to compliance with requirements, provide product indicated on Drawings or comparable product by one of the following:
 - a. Hager Companies.
 - b. Standard Hinges (Interior):
Provide new 1279 4-1/2 X 4-1/2 X 625 hinges except where existing are called to be reused in door schedule.
 - c. Ball Bearing Hinges (Interior):
Provide new BB1279 4-1/2 X 4-1/2 X 625 hinges except where existing are called to be reused in door schedule.
 - d. Spacing of Hinges:
Provide one additional hinge at 48" wide doors and extra hinges tall doors as required so distance between hinges (vertically) does not to exceed 30".

2.3 MECHANICAL LOCKS AND LATCHES

- A. Cylindrical Locksets - Acceptable Manufacturers:
1. Corbin Russwin Hardware (RU) – CL3300 Series.
 2. Schlage (SC) – AL Series.
 3. Yale Locks and Hardware (YA) – 5400 Series.
- B. Lock Functions: As indicated in door hardware schedule.

- C. Lock Throw: Comply with testing requirements for length of bolts required for labeled fire doors, and as follows:
1. Bored Locks: Minimum **1/2-inch (13-mm)** latchbolt throw.
- D. Lock Backset: **2-3/4 inches (70 mm)**, unless otherwise indicated.
- E. Lock Trim:
1. Description: Corbin Russwin
 2. Levers: Cast Zinc.
 3. Escutcheons (Roses): Wrought or Stainless.
 4. Dummy Trim: Match lever lock trim and escutcheons.
 5. Operating Device: Lever with escutcheons (roses). Cylindrical Locks: BHMA Corbin Russwin Series CL3500 grade 1
 - a. Lever Style: Newport Hager CL3300 Series.
 - 1) Functions:
 - a) Entrance / Office = CL3351
 - b) Passage = CL3380
 - c) Storage = CL3357
 - b. Finish: 626 Satin Chrome
- F. Strikes: Provide manufacturer's standard strike for each lock bolt or latchbolt complying with requirements indicated for applicable lock or latch and with strike box and curved lip extended to protect frame; finished to match lock or latch.

2.4 LOCK CYLINDERS

- A. Lock Cylinders: Tumbler type, constructed from brass or bronze, stainless steel, or nickel silver.
1. Basis-of-Design Product: Subject to compliance with requirements, provide product as follows:
 - a. Best Access Systems; Div. of Stanley Security Solutions, Inc.
 2. Interchangeable Cores: Core insert, removable by use of a special key; usable with other manufacturers' cylinders.
 3. Number of Pins: Seven.
 4. F Keyway 710
- B. Standard Lock Cylinders: BHMA A156.5; Grade 1; permanent cores that are figure 8 interchangeable; face finished to match lockset.
- C. Construction Master Keys: Provide cylinders with feature that permits voiding of construction keys without cylinder removal. Provide 10 construction master keys.
- D. Construction Cores: Provide construction cores that are replaceable by permanent cores. Provide 10 construction master keys.

2.5 KEYING

- A. Keying System: Factory registered, complying with guidelines in BHMA A156.28, Appendix A. Incorporate decisions made in keying conference.
1. Keyed Alike: Key all cylinders to same change key.
- B. Keys: Brass.
1. Stamping: Permanently inscribe each key with a visual key control number and include the following notation:
 - a. Notation: Information to be furnished by Owner.
 2. Quantity: In addition to one extra key blank for each lock, provide the following:
 - a. Cylinder Change Keys: Three.
 - b. Master Keys: Five.
 - c. Grand Master Keys: Five.
 - d. Great-Grand Master Keys: Five.

2.6 SURFACE CLOSERS

- A. Surface Closers: BHMA A156.4; rack-and-pinion hydraulic type with adjustable sweep and latch speeds controlled by key-operated valves and forged-steel main arm. Comply with manufacturer's written recommendations for size of door closers depending on size of door, exposure to weather, and anticipated frequency of use. Provide factory-sized closers, adjustable to meet field conditions and requirements for opening force.
1. Manufacturers: Subject to compliance with requirements, available manufacturers offering products that may be incorporated into the Work include, but are not limited to, the following:
 - a. Available Manufacturers: Hagar (HAG)
 - b. Series: 5100
 - c. Grade: Heavy duty grade 1
 - d. Type: Tri-packed for mounting regular arm, parallel arm and top jamb mounting.
 - e. Body Material: Cast Iron
 - f. Cover: Full Plastic Cover
 - g. Finish: Painted
 - h. Color: Aluminum

2.7 MECHANICAL STOPS AND HOLDERS

- A. Wall- and Floor-Mounted Stops: BHMA A156.16
1. Manufacturers: Subject to compliance with requirements, available manufacturers offering products that may be incorporated into the Work include, but are not limited to, the following:

- a. Wall Stop: 230W
 - i. Finish: 625 Polished Chrome
- b. Floor Stop: 242F
 - i. Finish: 625 Polished Chrome
- c. Provide wall stops (where stops are scheduled) for most door situations; provide floor stops when wall stops will not work. Do not mount floor stops where they will impede traffic. Where floor or wall stops are not appropriate, provide overhead holders.

2.8 STRIKES

1. 1. Electric Strikes:
 - a. Securitron; Mortise Unlatch – Provide Push Button Release at reception desk with 24 volt transformer as required for full operation
 - b. Strikes: Provide manufacturer's standard strike with strike box for each latch or lock bolt, with curved lip extended to protect frame, finished to match door hardware set, unless otherwise indicated, and as follows:
Wrought box strikes: Wrought box strikes shall be provided for all locks.
Dustproof Strikes: BHMA Grade 1.
Electric Strikes: BHMA Grade 1.

2.9 DOOR GASKETING

- A. Door Gasketing: BHMA A156.22; air leakage not to exceed 0.50 cfm per foot (0.000774 cu. m/s per m) of crack length for gasketing other than for smoke control, as tested according to ASTM E 283; with resilient or flexible seal strips that are easily replaceable and readily available from stocks maintained by manufacturer.
 1. Manufacturers: Subject to compliance with requirements, available manufacturers offering products that may be incorporated into the Work include, but are not limited to, the following:
 - a. Fire Gasketing (PEM). – Single Door
 - b. Pemko Manufacturing Co, Inc. (PEM)
 - 1) Model Number: PK33D
 - 2) Finish: Dark Bronze
 - 3) Mounting: Adhesive backing inside corner
 - 4) Gasket Material: Neoprene

2.10 AUXILIARY DOOR HARDWARE

- A. Auxiliary Hardware: BHMA A156.16.
 1. Manufacturers: Subject to compliance with requirements, available manufacturers offering products that may be incorporated into the Work include, but are not limited to, the following:

a. Hager Companies.

2.11 EXIT DEVICES

A. Exit Devices.

1. Requirements and applications:

- a. Heavy duty, Grade 1 types.
- b. Heavy duty trim meeting ANSI – A117.1 accessibility codes.
- c. Thru bolt mounting for all exit devices.
- d. Provide removable core cylinders for locking functions.
- e. Rim types for single doors.
- f. Surface vertical rod types for double doors.
- g. UL listed as panic hardware at non-rated doors.
- h. UL listed as fire exit hardware at fire rated doors.

2. Finish:

- a. Satin stainless steel (US32D).

3. Acceptable manufacturers and products:

a. NOTE:

- 1) Provide UL labeled devices for rated doors as required.

b. Rim exit device x exit only x no outside trim:

- 1) Corbin Russwin – ED5200
- 2) Sargent – 8810
- 3) Von Duprin – 98EO
- 4) Yale – 7100

c. Rim exit device x lever trim x storeroom function, provide fire rated types as required for fire rated doors.

- 1) Corbin Russwin – ED5200 x PR959

d. Mortise x Vertical rod exit devices x less bottom rods x lever trim x classroom function

- 1) Corbin Russwin – ED5470 x LBR x PR955

e. Mortise exit device x lever trim x classroom function

- 1) Corbin Russwin – ED5600L x PR9M55

2.12 ELECTRIC STRIKES

A. Electric Strikes: BHMA A156.31; **Grade 1**; with faceplate to suit lock and frame.

B. Miscellaneous Electrical Hardware.

1. Requirements and applications:

a. Electric strikes:

- 1) UL10C fire rated for single doors, fail secure.
- 2) Stainless steel construction.
- 3) Dual voltage, 12 or 24VDC.
- 4) Provide transformers as required by manufacturer.

- b. Electric power transfers:
 - 1) UL listed as miscellaneous fire door accessories.
 - 2) Provide the number of wires as required by associated locking device.
- 2. Finish:
 - a. Satin stainless steel (US32D).
 - 1) Electric strikes
 - b. Satin aluminum.
 - 1) Electric power transfer:
- 3. Acceptable manufacturers and products.
 - a. Electric strikes for lock sets on single doors:
 - 1) HES – 1006 series
 - 2) Folger Adam – 742-75 series
 - 3) Von Duprin – 6210
 - b. Electric for rim exit devices:
 - 1) HES – 9500 series
 - 2) Folger Adams – 310 series
 - 3) Von Duprin – 6300 series
 - e. Electric power transfers:
 - 1) Von Duprin – EPT
 - 2) Securitron – ETP
 - 3) Yale – EPT

2.13 MANUAL FLUSH BOLTS

- A. Manual Flush Bolts: BHMA A156.16; minimum 3/4-inch (19-mm) throw; designed for mortising into door edge.

2.14 FABRICATION

- A. Manufacturer's Nameplate: Do not provide products that have manufacturer's name or trade name displayed in a visible location except in conjunction with required fire-rated labels and as otherwise approved by Architect.
 - 1. Manufacturer's identification is permitted on rim of lock cylinders only.
- B. Base Metals: Produce door hardware units of base metal indicated, fabricated by forming method indicated, using manufacturer's standard metal alloy, composition, temper, and hardness. Furnish metals of a quality equal to or greater than that of specified door hardware units and BHMA A156.18.
- C. Fasteners: Provide door hardware manufactured to comply with published templates prepared for machine, wood, and sheet metal screws. Provide screws that comply with commercially recognized industry standards for application intended, except aluminum fasteners are not permitted. Provide Phillips flat-head screws with finished heads to match surface of door hardware, unless otherwise indicated.
 - 1. Concealed Fasteners: For door hardware units that are exposed when door is closed, except for units already specified with concealed fasteners. Do not use through bolts for installation where bolt head or nut on opposite face is exposed unless it is the only means of securely attaching the door hardware. Where through bolts are used on hollow door and frame construction, provide sleeves for each through bolt.

2. Fire-Rated Applications:
 - a. Wood or Machine Screws: For the following:
 - 1) Hinges mortised to doors or frames; use threaded-to-the-head wood screws for wood doors and frames.
 - 2) Strike plates to frames.
 - 3) Closers to doors and frames.
 - b. Steel Through Bolts: For the following unless door blocking is provided:
 - 1) Surface hinges to doors.
 - 2) Closers to doors and frames.
 - 3) Surface-mounted exit devices.
3. Spacers or Sex Bolts: For through bolting of hollow-metal doors.
4. Fasteners for Wood Doors: Comply with requirements in DHI WDHS.2, "Recommended Fasteners for Wood Doors."
5. Gasketing Fasteners: Provide noncorrosive fasteners for exterior applications and elsewhere as indicated.

2.15 FINISHES

- A. Provide finishes complying with BHMA A156.18 as indicated in door hardware schedule.
- B. Protect mechanical finishes on exposed surfaces from damage by applying a strippable, temporary protective covering before shipping.
- C. Appearance of Finished Work: Variations in appearance of abutting or adjacent pieces are acceptable if they are within one-half of the range of approved Samples. Noticeable variations in the same piece are not acceptable. Variations in appearance of other components are acceptable if they are within the range of approved Samples and are assembled or installed to minimize contrast.

PART 3 - EXECUTION

3.1 EXAMINATION

- A. Examine doors and frames, with Installer present, for compliance with requirements for installation tolerances, labeled fire-rated door assembly construction, wall and floor construction, and other conditions affecting performance.
- B. Examine roughing-in for electrical power systems to verify actual locations of wiring connections before electrified door hardware installation.
- C. Proceed with installation only after unsatisfactory conditions have been corrected.

3.2 PREPARATION

- A. Steel Doors and Frames: For surface applied door hardware, drill and tap doors and frames according to ANSI/SDI A250.6.
- B. Wood Doors: Comply with DHI WDHS.5 "Recommended Hardware Reinforcement Locations for Mineral Core Wood Flush Doors."

3.3 INSTALLATION

- A. Mounting Heights: Mount door hardware units at heights to comply with the following unless otherwise indicated or required to comply with governing regulations.
 - 1. Standard Steel Doors and Frames: ANSI/SDI A250.8.
 - 2. Wood Doors: DHI WDHS.3, "Recommended Locations for Architectural Hardware for Wood Flush Doors."
- B. Install each door hardware item to comply with manufacturer's written instructions. Where cutting and fitting are required to install door hardware onto or into surfaces that are later to be painted or finished in another way, coordinate removal, storage, and reinstallation of surface protective trim units with finishing. Do not install surface-mounted items until finishes have been completed on substrates involved.
 - 1. Set units level, plumb, and true to line and location. Adjust and reinforce attachment substrates as necessary for proper installation and operation.
 - 2. Drill and countersink units that are not factory prepared for anchorage fasteners. Space fasteners and anchors according to industry standards.
- C. Hinges: Install types and in quantities indicated in door hardware schedule but not fewer than the number recommended by manufacturer for application indicated or one hinge for every 30 inches (750 mm) of door height, whichever is more stringent, unless other equivalent means of support for door, such as spring hinges or pivots, are provided.
- D. Lock Cylinders: Install construction cores to secure building and areas during construction period.
 - 1. Contractor shall purchase and furnish best cores to the owner. The Owner will key and install all cores.
- E. Boxed Power Supplies: Locate power supplies as indicated or, if not indicated, above accessible ceilings. Verify location with Architect.
 - 1. Configuration: Provide least number of power supplies required to adequately serve doors with electrified door hardware.
- F. Stops: Provide wall stops for doors unless floor or other type stops are indicated in door hardware schedule. Do not mount floor stops where they will impede traffic.
- G. Perimeter Gasketing: Apply to head and jamb, forming seal between door and frame.

3.4 FIELD QUALITY CONTROL

3.5 ADJUSTING

- A. Initial Adjustment: Adjust and check each operating item of door hardware and each door to ensure proper operation or function of every unit. Replace units that cannot be adjusted to operate as intended. Adjust door control devices to compensate for final operation of heating and ventilating equipment and to comply with referenced accessibility requirements.
1. Spring Hinges: Adjust to achieve positive latching when door is allowed to close freely from an open position of 30 degrees.
 2. Door Closers: Adjust sweep period to comply with accessibility requirements and requirements of authorities having jurisdiction.
- B. Occupancy Adjustment: Approximately three months after date of Substantial Completion, Installer's Architectural Hardware Consultant shall examine and readjust each item of door hardware, including adjusting operating forces, as necessary to ensure function of doors, door hardware, and electrified door hardware.

3.6 CLEANING AND PROTECTION

- A. Clean adjacent surfaces soiled by door hardware installation.
- B. Clean operating items as necessary to restore proper function and finish.
- C. Provide final protection and maintain conditions that ensure that door hardware is without damage or deterioration at time of Substantial Completion.

3.7 DOOR HARDWARE SCHEDULE

- A. Locksets, exit devices, and other hardware items are referenced in the following hardware sets for series, type and function. Refer to the above-specifications for special features, options, cylinders/keying, and other requirements.
- B. Hardware Sets:
- C. **Green Items: Provided by Aluminum and Glass Door Manufacturer**
- D. **Blue Items: Provided by Dirrt Manufacturer**
- E. **Yellow Items: Provided by Access Control (Outside this Contract)**

Set 1

Door #(s): 100-A

Pair | A&G

- 1 **Refer to Aluminum-Framed Entrance and Storefronts Specification Section for the remainder of Hardware**

Set 2

Door #(s): 103-A

Single | A&G

1	Set of Interior BB Hinges with power transfer middle hinge	by dirtt wall system.
1	Panic Rim Exit Device with Electric Latch Retraction	by dirtt wall system.
1	Closer	by dirtt wall system.
1	Wall Stops	by dirtt wall system.
1	Under counter switch at reception counter for initiation of Latch Retraction of Panic Exit Device	by dirtt wall system.
1	ea	multitech reader by access control supplier
1	ea	dr position switch by access control supplier
1	ea	power supply by access control supplier
1	ea	cable (lock or exit to electrical power transfer) by access control supplier
1	ea	cable (electrical power transfer to building wiring) by access supplier

Operation: by under counter switch or by reader

Set 3

Door #(s): 102-A, 300-A

Single | A&G

1	Set of Interior BB Hinges	by dirtt wall system.
1	Passage / latchset	by dirtt wall system.
1	Closer	by dirtt wall system.
1	Wall Stops	by dirtt wall system.

Set 4

Door #(s): 101-A, 201-A, 201-B,

Single | A&G

1	Set of Interior BB Hinges	by dirtt wall system.
1	Office / Entry Lock	by dirtt wall system.
1	Closer	by dirtt wall system.
1	Wall Stops	by dirtt wall system.

Set 5

Door #(s): 104-A

Single | 1hr | Wd

1	Sets of Interior BB Hinges with power transfer
1	Panic Rim Exit Device with Electric Latch Retraction / Fire Rated
1	Closer
1	Wall Stops

1	ea	multitech reader	by access control supplier
1	ea	dr position switch	by access control supplier
1	ea	power supply	by access control supplier
1	ea	cable(lock or exit to electrical power transfer)	by access control supplier
1	ea	cable(electrical power transfer to building wiring)	by access control supplier

Operation: Reader on outside of stairway

Set 6

Single | A&G

Door #(s): 106-A, 107-A, 108-A, 109-A, 110-A, 111-A, 112-A, 117-A, 118-A, 119-A, 120-A 210-A, 211-A, 212-A, 214A, 216A, 218-A, 302-A, 303-A, 304-A, 305A, 306-A, 307-A, 308-A, 309-A, 310-A

EACH TO HAVE (DIRTT Provided):

Qty		Description	Catalog Number	Finish	Mfr
1	ea	bd track	by dirtt wall system.		
1	ea	office/entry lock	by dirtt wall system.		
1	ea	30" bar pull	by dirtt wall system.		
1	EA	THUMB TURN CYL	by dirtt wall system.		

Set 7Door #(s): 115-A, 121A, 122-A, 127-A, 218-A, 219-A, 205-A, 207-A, 213-A, 219-A, 220-A, 306-B, 311-A, 318A, 319-A, **317-B**

Single | Wd | HM

1 Storage Lockset
 1set Interior Hinges
 1 Wall Stop

Set 8

Pair | non rated | 90min | HM

Door #(s): 126-A, 129-A, 317-A

2 Sets of Exterior BB Hinges with power transfer
 2 Closers
 2 Floor Stops
 2 Panic Exit Devices/Surface Vertical Rods /Electric Latch Retraction /LBR / Mortise / Newport / Nightlatch
 2 Cylinders
 2 Sets of Weather Stripping
 1 Threshold

1	ea	multitech reader	by access control system supplier		
2	ea	dr position switch	by access control system supplier		
1	ea	power supply	by access control system supplier		
2	ea	cable(lock or exit to electrical power transfer)	by access control supplier		
2	ea	cable(electrical power transfer to building wiring)	by access control supplier		

Set 9

Single | Wd

Door #(s): 124-A, 125-A, ~~208-A, 209-A~~, 313-A, 314-A

1 Sets of Interior BB Hinges
 1 Push Plate
 1 Pull
 1 Closers
 1 Wall Stop
 2 Kick Plates

Set 10**Pair | Wd | Sm****Door #(s): 129-C, 217-B**

- 2 Sets of Interior BB Hinges**
- 2 Panic Exit Devices / Passage / Surface Vertical Rods / LBR / Newport**
- 2 Closers with hold open device**
- 1 Fire Seals**
- 2 Wall Stop**

Set 11**Single | HM | Wd | NR | 45 Min****Door #(s): 128-A, 129-B**

- 1 Sets of Interior BB Hinges with power transfer
- 1 Closer
- 1 Floor Stop
- 1 Storage Lockset
- 1 Electric Strike
- 1 Cylinder
- 1 Fire Seals on 129 only

<i>l</i>	<i>ea</i>	<i>multitech reader</i>	<i>by access control system supplier</i>
<i>l</i>	<i>ea</i>	<i>dr position switch</i>	<i>by access control system supplier</i>
<i>l</i>	<i>ea</i>	<i>power supply</i>	<i>by access control system supplier</i>
<i>l</i>	<i>ea</i>	<i>cable(lock or exit to electrical power transfer)</i>	<i>by access control system supplier</i>
<i>l</i>	<i>ea</i>	<i>cable(electrical power transfer to building wiring)</i>	<i>by access control system supplier</i>

Set 12**Door #(s): 200-A, 301-A****Single | 1 Hr | Wd**

- 1 Sets of Interior BB Hinges with power transfer
- 1 Closer
- 1 Floor Stop
- 1 Storage Lockset
- 1 Fire Seals
- 1 Cylinder

Set 13**Door #(s): 217-A****Single**

- 1 Set of Exterior BB Hinges with power transfer
- 1 Panic Exit Device with Electric Latch Retraction Fire Rated
- 1 Closer
- 1 Wall Stops

<i>l</i>	<i>ea</i>	<i>multitech reader</i>	<i>by access control system supplier</i>
<i>l</i>	<i>ea</i>	<i>dr position switch</i>	<i>by access control system supplier</i>
<i>l</i>	<i>ea</i>	<i>power supply</i>	<i>by access control system supplier</i>
<i>l</i>	<i>ea</i>	<i>cable(lock or exit to electrical power transfer)</i>	<i>by access control system supplier</i>
<i>l</i>	<i>ea</i>	<i>cable(electrical power transfer to building wiring)</i>	<i>by access control system supplier</i>

Operation: Reader on outside of building

Set 14

Door #(s): 201-A, 201B

Single | 45 Min | Wd

- ~~1~~ Sets of Interior BB Hinges
- ~~1~~ Office Lockset
- ~~1~~ Closers
- ~~1~~ Fire Seals
- ~~1~~ Wall Stop

- 2** Sets of Interior BB Hinges *by dirtt wall system*
- 2** Panic Exit Device / Surface Vertical Rods / LBR / Mortise / Newport *by dirtt wall system*
- 2** Closers *by dirtt wall system*
- 2** Wall Stops *by dirtt wall system*

Panic Exit Devices/Surface Vertical Rods /Electric Latch Retraction /LBR / Mortise / Newport /

Set 15

Door #(s): 202-A, 202-B

Single | A&G

Single | Wd

- ~~1~~ Set of Interior BB Hinges with power transfer *by dirtt wall system*
- ~~1~~ Rim Panic Exit Device w/ Electric Latch Retraction *by dirtt wall system*
- ~~1~~ Closer *by dirtt wall system*
- ~~1~~ Wall Stop *by dirtt wall system*

- 1** Set of Interior BB Hinges with power transfer
- 1** Rim Panic Exit Device w/ Electric Latch Retraction
- 1** Closer
- 1** Wall Stop

- 1 ea multitech reader by access control system supplier*
- 1 ea dr position switch by access control system supplier*
- 1 ea power supply by access control system supplier*

- 1 ea cable (lock or exit to electrical power transfer) by access control system supplier*
- 1 ea cable (electrical power transfer to building wiring) by access control system supplier*

Set 16

Door #(s): 204-A

Single | Wd

- 1** Set of Interior BB Hinges

- 1 Passage Lockset
- 1 Closer
- 1 Wall Stop

Set 17

Door #(s): 215-A, 221-A, 222-A

Pair | Wd

- 2 Set of Interior Hinges
- 1 Flush Bolt on non-active Door
- 1 Storage Lockset on Active Door
- 2 Wall Stop

Set 18

Door #(s): 312-A

Pair | 45 Min | Wd

- 1 Storage Lockset
- 1set Interior Hinges
- 1 Fire Seals
- 1 Wall Stop

Set 19

Door #(s): 311-A

Pair | HM

- 1 Storage Lockset
- 1set Exterior Hinges
- 1 Set of Weather Stripping
- 1 Threshold
- 1 Wall Stop

Set 20

Door #(s): 300-A

Double | A&G

- 2 Set of Interior BB Hinges *by dirtt wall system.*
- 2 Pulls *by dirtt wall system.*
- 2 Push Bars *by dirtt wall system.*
- 2 Closer *by dirtt wall system.*
- 2 Wall Stops *by dirtt wall system.*

Set 21

Door #(s): 301A

Single | 1Hr | Wd

- 1 Set of interior BB hinges with power transfer middle hinge
- 1 Panic rim exit device w/ electric latch retraction
- 1 Closer
- 1 Storage Lockset
- 1 Fire Seals
- 1 Cylinder
- 1 ea multitech reader by access control system supplier
- 1 ea dr position switch by access control system supplier
- 1 ea power supply by access control system supplier
- 1 ea cable(lock or exit to electrical power transfer) by access control system supplier
- 1 ea cable(electrical power transfer to building wiring) by access control system supplier

Set 22

Door #(s): 105-A

Double | A&G

- 2 Sets of Interior BB Hinges by dirt wall system
- 2 Pulls by dirt wall system
- 2 Push Bars by dirt wall system
- 2 Closers with hold open device by dirt wall system
- 1 Fire Seals by dirt wall system
- 2 Wall Stops by dirt wall system

Set 23

Single | Wd

Door #(s): 208-A, 209-A

- 1 Sets of Interior BB Hinges
- 1 Passage Latchset
- 1 Closers
- 1 Wall Stop
- 2 Kick Plates

General Notes:

Provide cylinders as required for each door provide to dirt wall for factory installation
 Provide cores for each lock set to owner. Owner will key and install.
 Provide new mutes at all hollow metal door frames.

END OF SECTION 087100